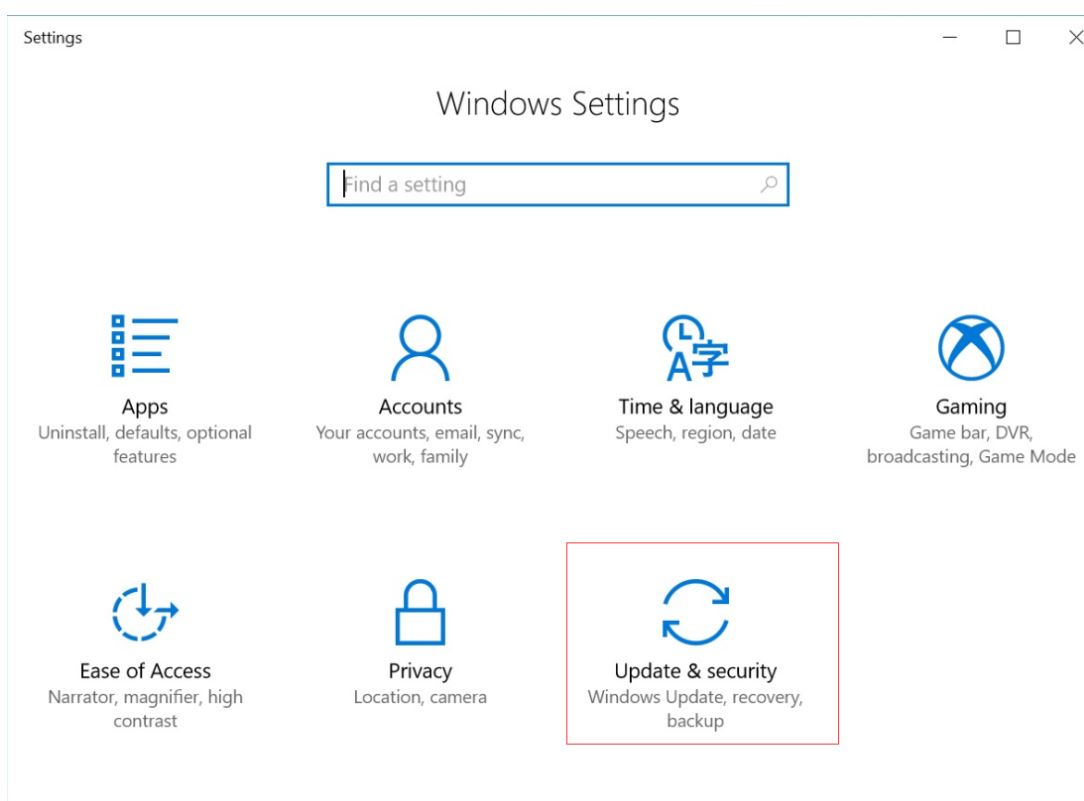
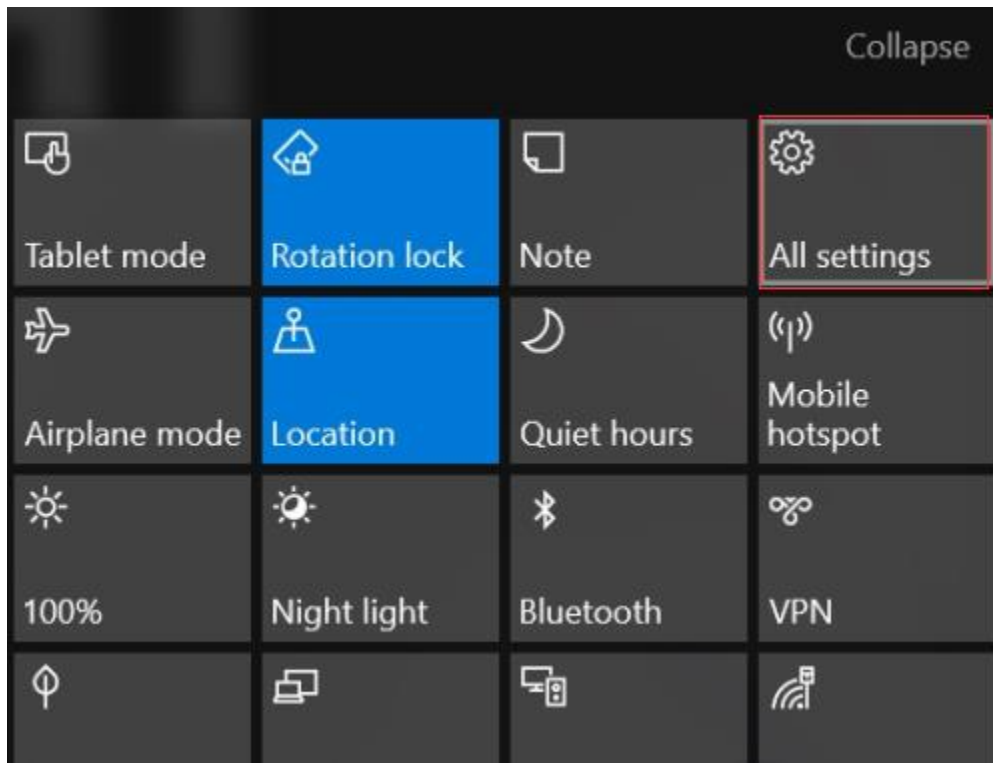
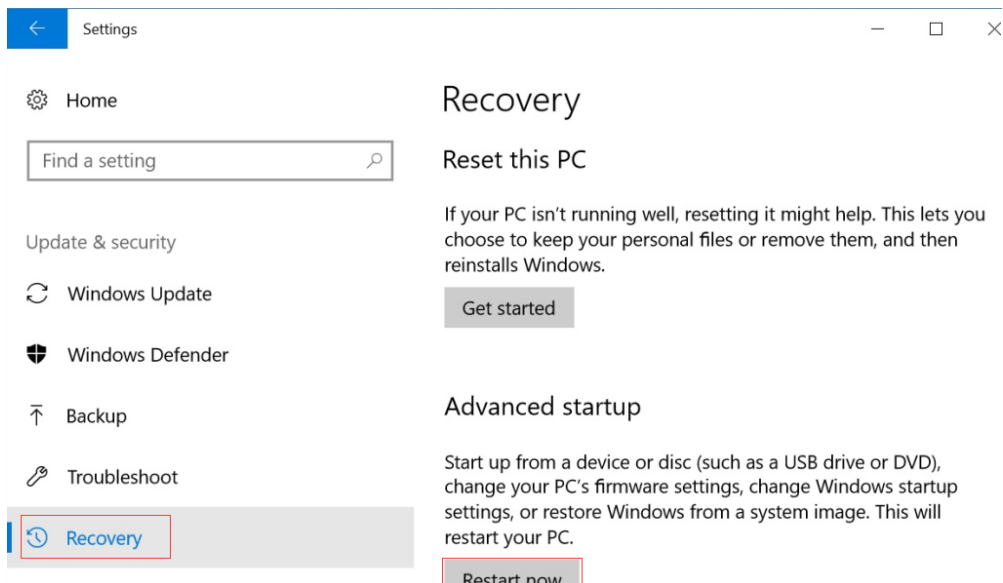


PhoenixSuit Manual

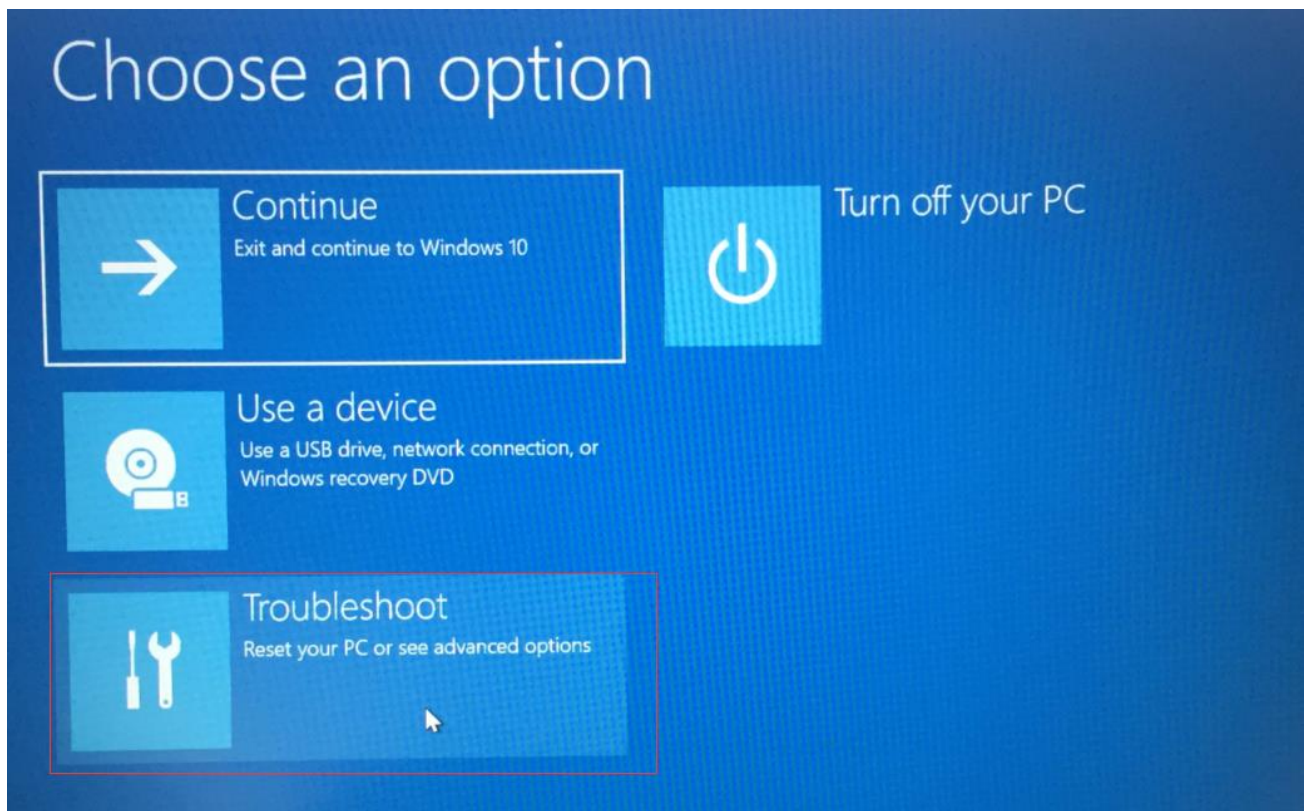
1. First enable drivers for Win10, open settings and click update & security.



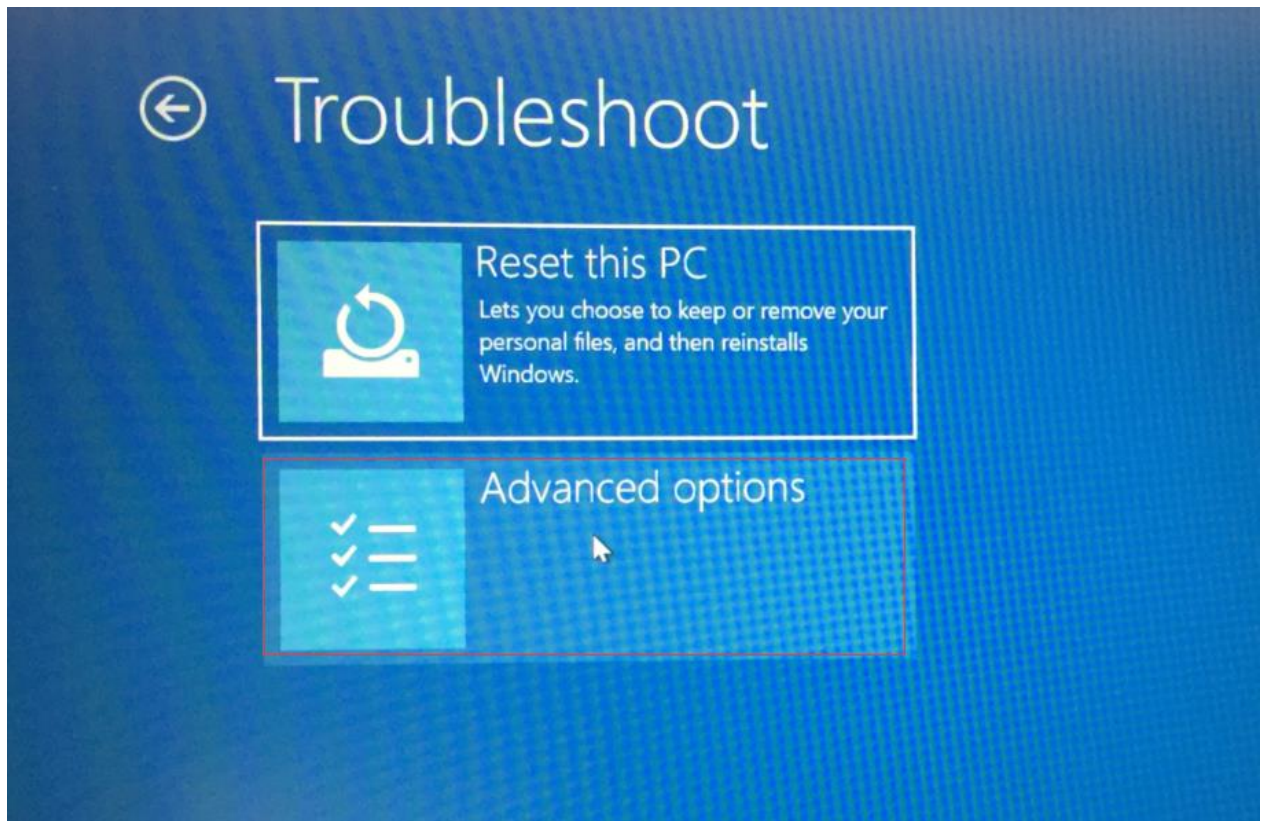
2. Click Recovery and Restart now



3. Click Troubleshoot



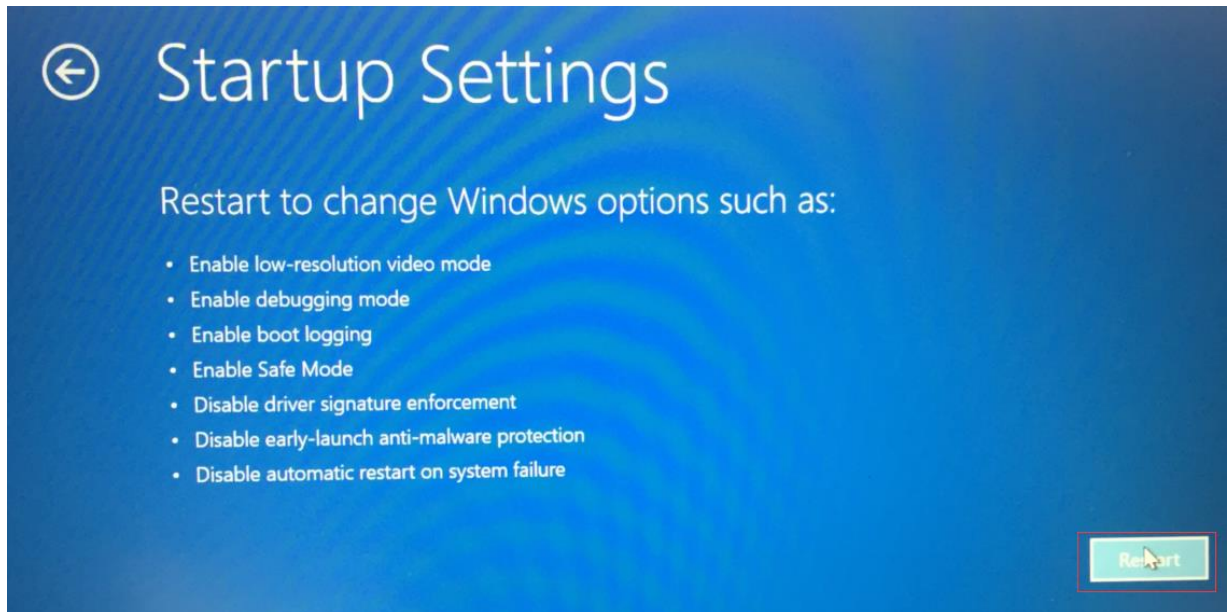
4. Click Advanced options



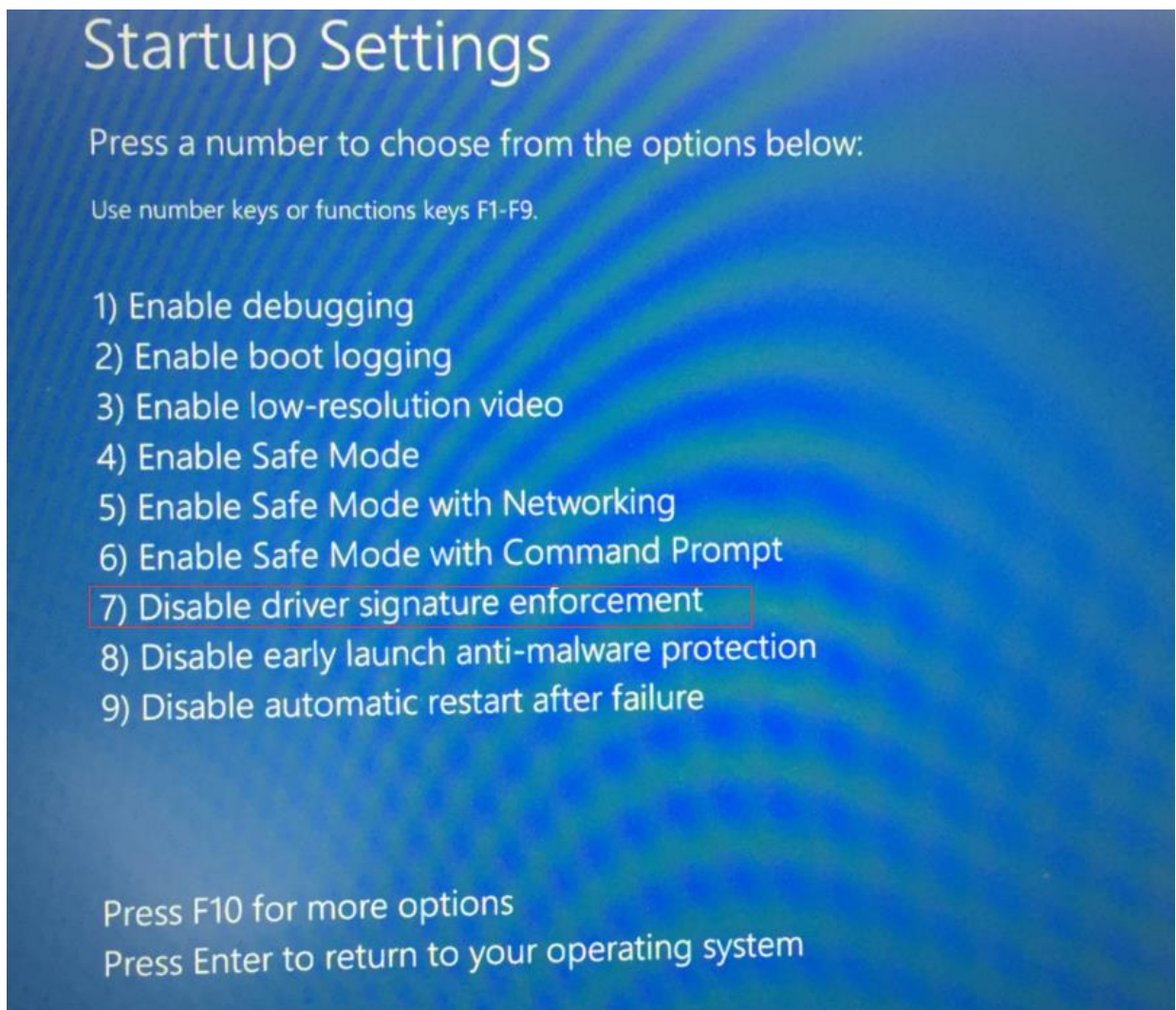
5. Click Startup Settings



6. Click Restart.



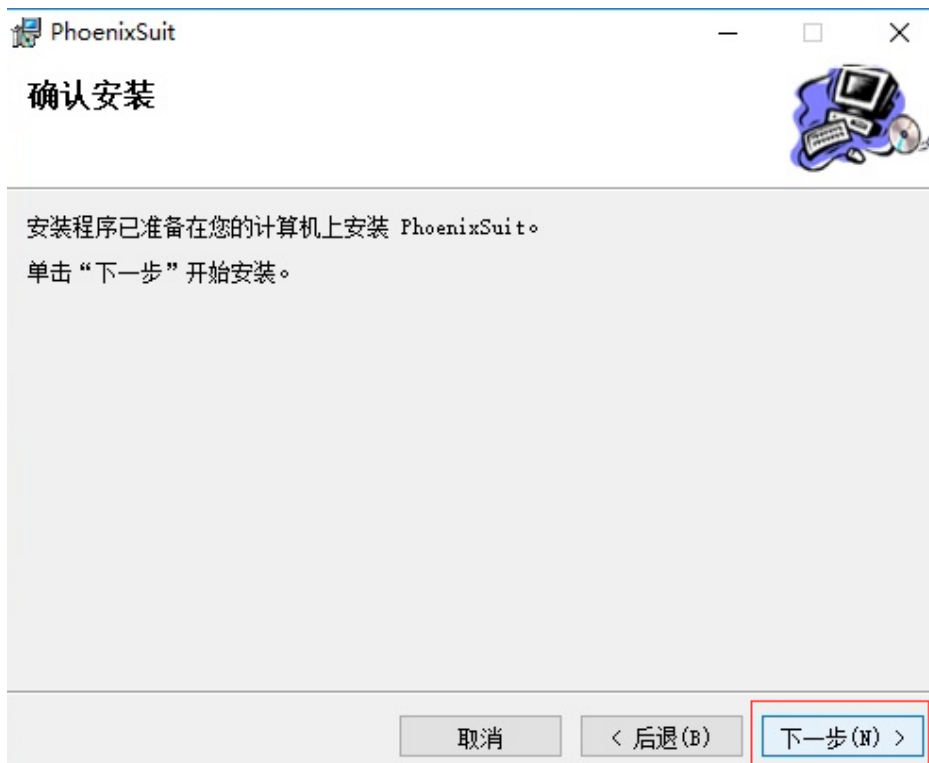
7. Type 7



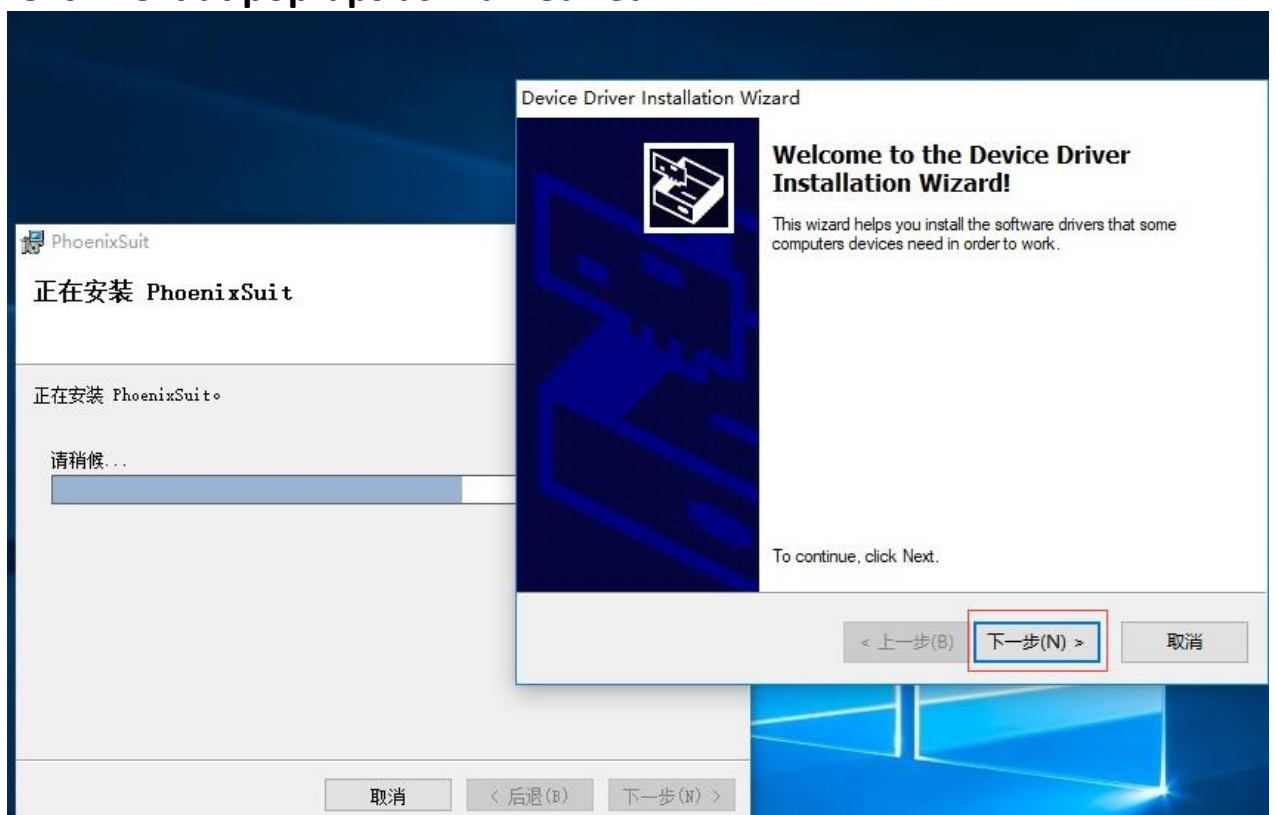
If your computer didn't install Win10, ignore the above.

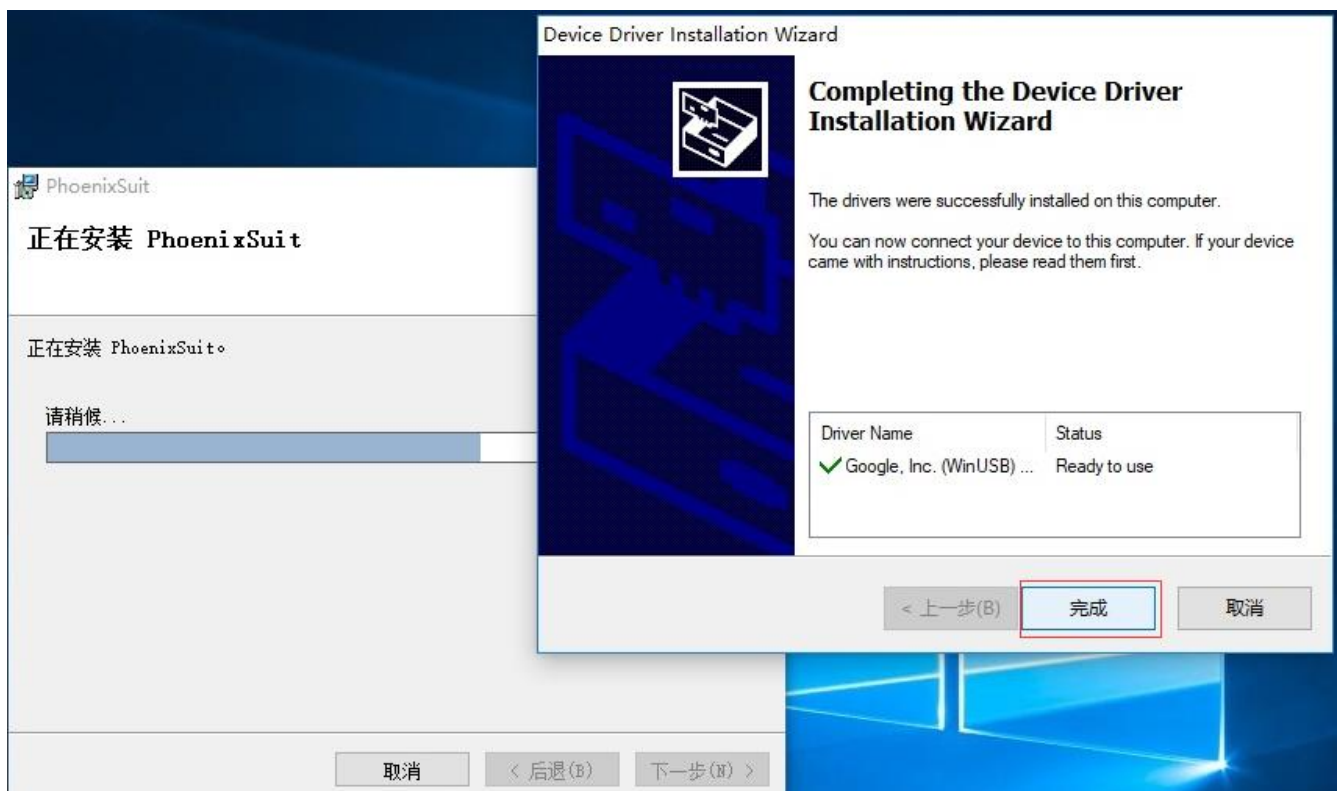
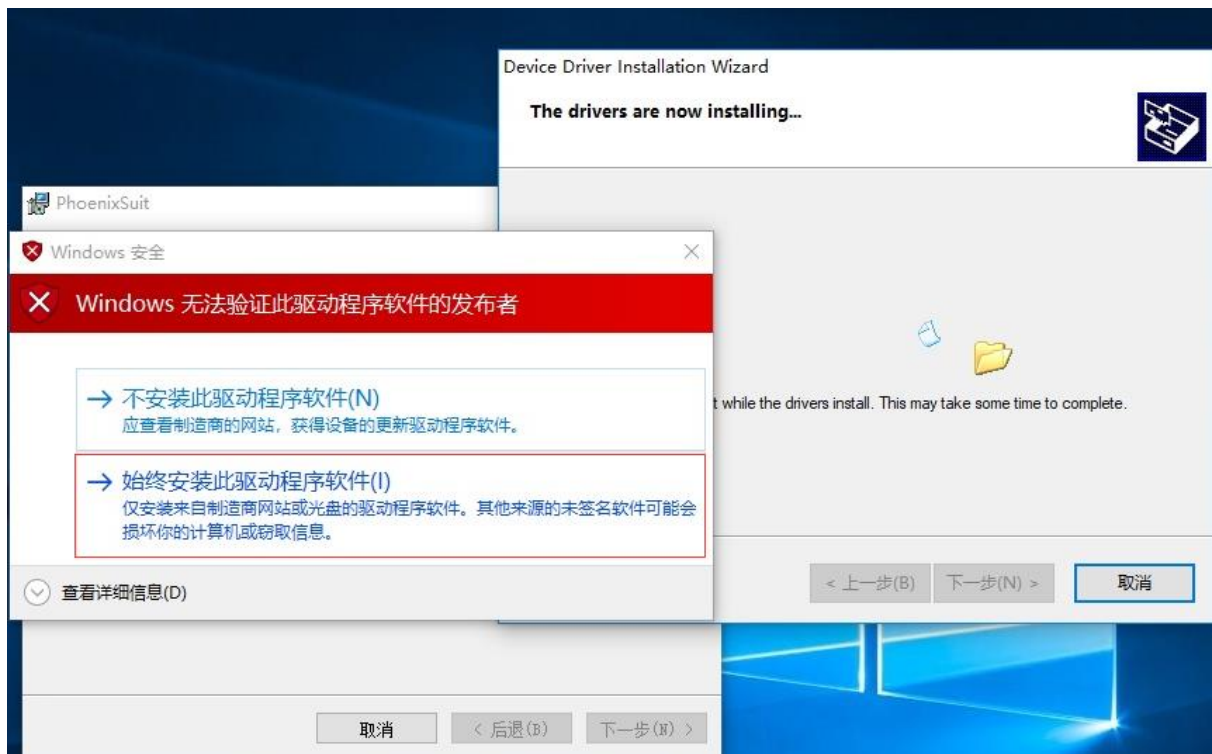
8. Open PhoenixSuitPacket.msi  PhoenixSuitPacket.msi , then click next three times as marked red.

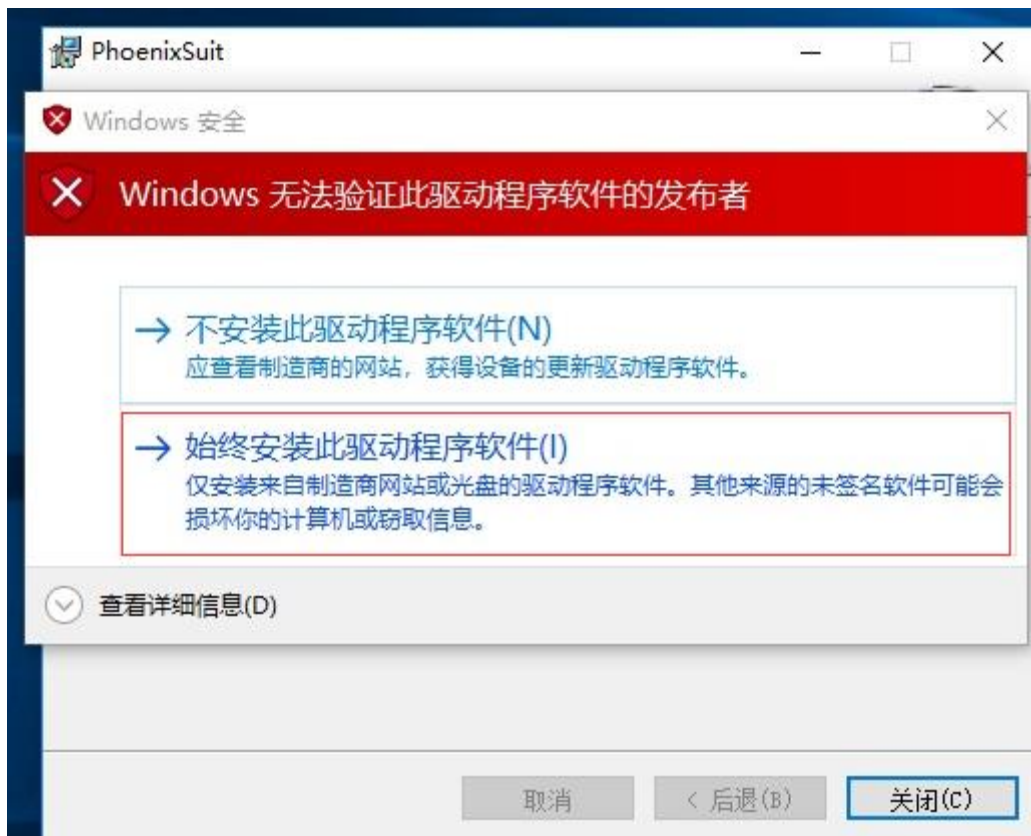




9. Click next at pop-ups as marked red.

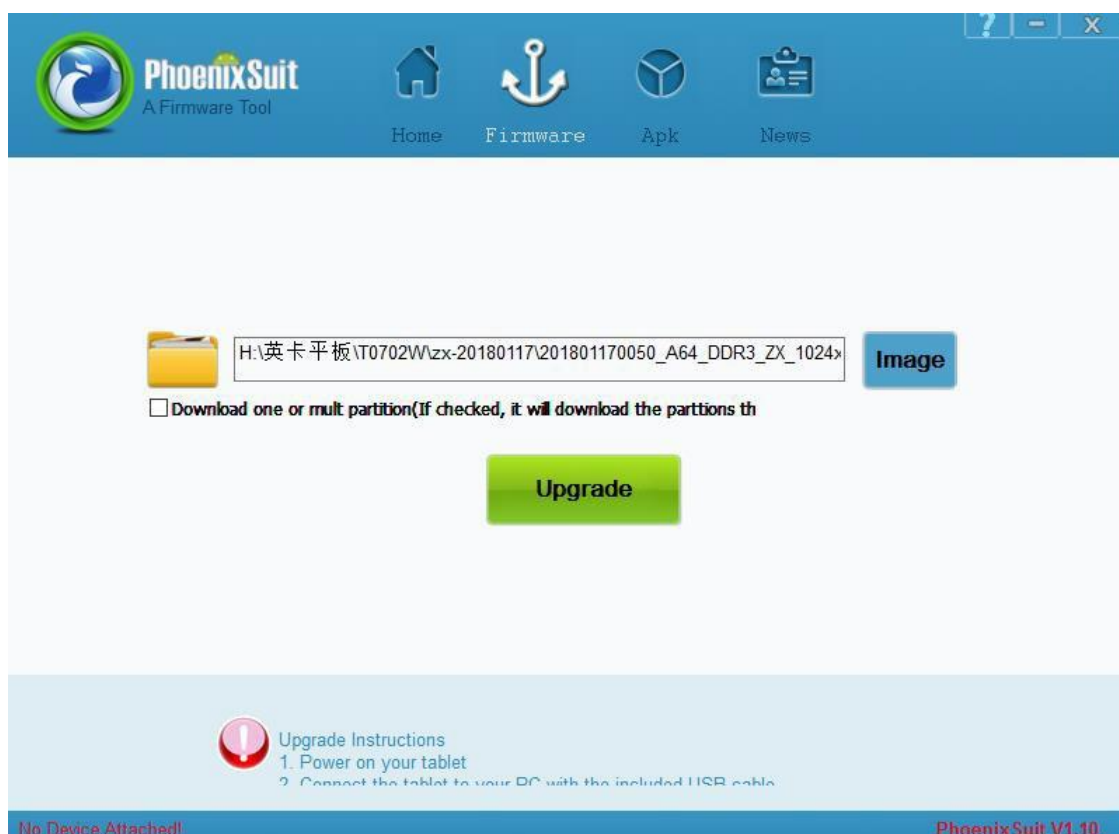




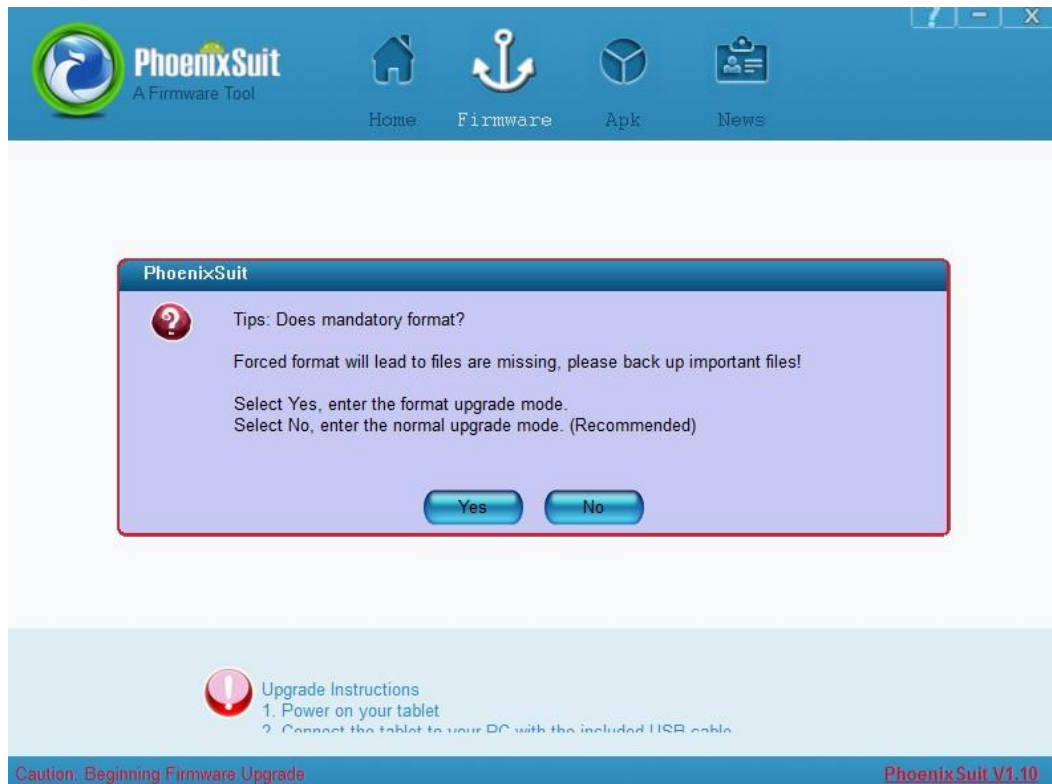


10. Open PhoenixSuit.exe in PhoenixSuit folder unzipped,

click  and  to select the img file.



11. Power off the tablet, press the Volume+ Key and do not release, connect the tablet to the PC with USB cable, click Power Key for about 5 times



3. Click Yes, the tablet will be auto upgraded

